

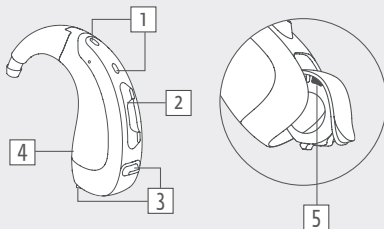
●● risa S



- 2.4 GHz Wireless-Technology
- 10k HD Sound
- Scene Detect  
(2 situations: speech & wind)
- easyclick
- Adaptive Sound Zoom
- Automatic Sound Zoom
- Sound Zoom
- Omni Mic
- Adaptive Noise Guard (2 levels)
- Expansion (Squelch)
- Wind Shield (in Scene Detect)
- Adaptive Feedback Guard
- 12 WDRC-Channels  
(48-channel internal signal processing)
- Multi Channel MPO
- Up to 4 programs
- Rocker Switch (programmable)
- Acoustic indicators
- Start-up Delay
- Tinnitus-Modul
- Data Logging
- MySound!
- Water repellent coating

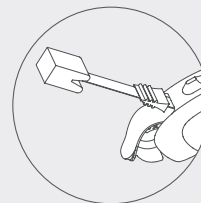
**Accessories/optional accessories/  
components:**

- audifon App
- CeruStop filter
- Conchaclip
- multistreamer pro
- UniTip Domes
- UniTip ThinTube



- 1 Dual Microphone system
- 2 Rocker Switch
- 3 Battery compartment/  
On-Off-switch
- 4 Type label
- 5 Side marking  
(red = right / blue = left)

Noahlink®  
Wireless



**Programming**

- with Noahlink Wireless with battery
- alternative programming with cable  
CS44 and Flex CS54 without battery

**Prog.-Box:**

- Noahlink Wireless
- NOAHlink
- HI-PRO
- HI-PRO USB



●● risa S

**Technical Data**

**EN 60118-0:2015** (2 cm<sup>3</sup>-coupler) & **ANSI S3.22-2014** (2 cm<sup>3</sup>-coupler)

<b>Operating Voltage</b>	1,30 V
<b>Acoustic Gain (50 dB SPL)</b>	
HFA	60 dB
Peak Value	67 dB
<b>Max. Output (90 dB SPL)</b>	
HFA	125 dB SPL
Peak Value	131 dB SPL
<b>Reference Test Gain</b>	48 dB
<b>Frequency Range</b>	100 Hz–6.700 Hz
<b>Total Harmonic Distortions</b>	
500/800/1.600/3.200 Hz	3/2/1/1 %
<b>Equivalent Input Noise</b>	22 dB
<b>Battery Current</b>	up to 3,3 mA
<b>Battery Type</b>	13
<b>Average Battery Life with Wireless<sup>1</sup></b>	100 h
<b>Tinnitusmasker<sup>2</sup></b>	
Noise Level (RMS)	107 dB
Frequency Range	200 Hz–8.000 Hz

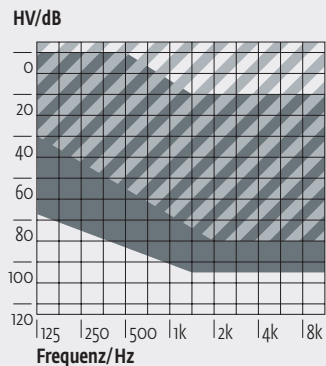
<sup>1</sup> depending on the active functions, the use of wireless accessories, the individual hearing loss and the listening environment

<sup>2</sup> only when Tinnitus-Module is activated in audifit



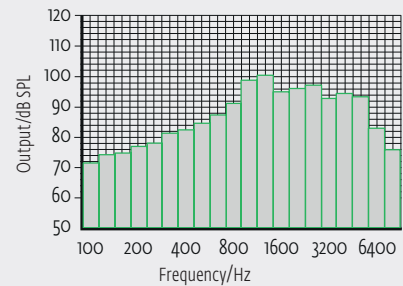
●● risa S

Fitting Range



The shaded area applies to the risa S with open dome.

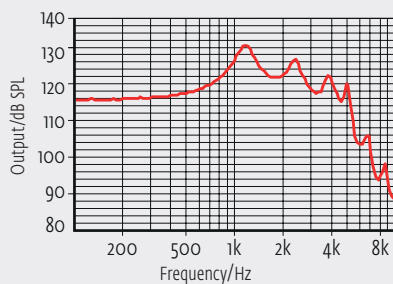
Third Octave Band Noise



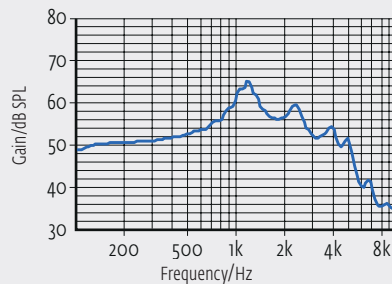
Only when Tinnitus-Module is activated in audifit.

The curves were determined with a 2 cm<sup>3</sup> coupler (EN 60318-5) in accordance with EN 60118-0:2015 at standard settings.

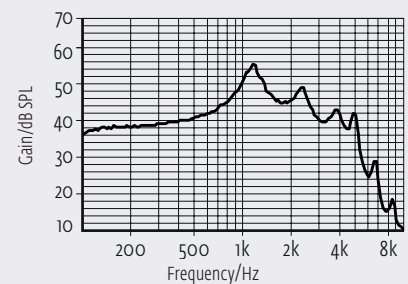
Maximum Output



Acoustic Gain



Frequency Response (RTG)



On account of the complex signal processing, the measurements of the represented curves are only possible in default setting of the device and under use of the current valid software version. Effects of the separate parameters see software.