

●● sino S

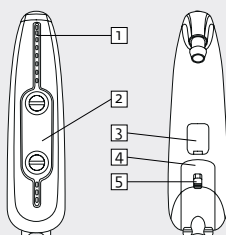


- 10k HD Sound
- Sound Zoom
- Adaptive Noise Guard
- Expansion (Squelch)
- Adaptive Feedback Guard
- Feedback Check
- 9 WDRC-Channels
- Multi Channel MPO
- Up to 4 Programs
- Rocker Switch (programmable)
- Low Battery Indicator
- Start-up Delay
- Battery Compartment Lock
- Direct Audio Input
- T-Coil
- Tinnitus-Module
- Data Logging
- Live View
- MySound!
- Water repellent coating
- Option: Easy Thin Tube System

Technical Data

	EN 60118-7:2005 (2 cm ³ -coupler)	EN 60118-0/A1:1994 (Ear Simulator)	ANSI S3.22-2009 (2 cm ³ -coupler)
Operating Voltage	1,30 V	1,30 V	1,30 V
Acoustic Gain (50 dB SPL)			
HFA	59 dB	-	59 dB
1600 Hz	-	71 dB	-
Peak Value	66 dB	72 dB	66 dB
Max. Output (90 dB SPL)			
HFA	124 dB SPL	-	124 dB SPL
1600 Hz	-	137 dB SPL	-
Peak Value	132 dB SPL	137 dB SPL	132 dB SPL
Reference Test Gain	48 dB	61 dB	48 dB
Induction Coil Sensitivity	83 dB SPL	99 dB SPL	109 dB SPL
Frequency Range	100 Hz-8000 Hz	100 Hz-6100 Hz	100 Hz-8000 Hz
Total Harmonic Distortions			
500/800/1600 Hz	5/3/2 %	6/3/3 %	5/3/2 %
Equivalent Input Noise	23 dB	18 dB	23 dB
Battery Current	1.45 mA	1.25 mA	1.45 mA
Battery Type	312	312	312
Average Battery Life (Zinc-Air)	100 h	100 h	100 h
Tinnitusmasker*			
Noise Level (RMS)	112	120	112
Frequency Range	600 Hz-6400 Hz	800 Hz-8000 Hz	600 Hz-6400 Hz

* Only when Tinnitus-Module is activated in audifit.



- 1 Dual Microphone system
- 2 Rocker switch
- 3 Cover flap for audio contacts
- 4 Battery compartment/On-Off-switch
- 5 Battery compartment lock

Standard



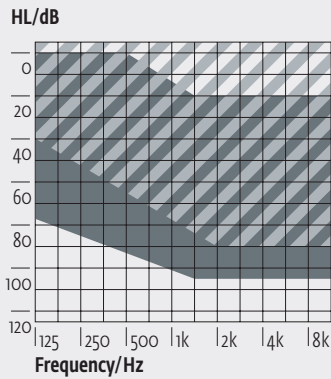
Programming

Cable: Cable set H or I
 Battery: without Battery
 Progr.-Box: HI-PRO/HI-PRO II
 HI-PRO USB
 NOAHlink
 Software: audifit 5.5



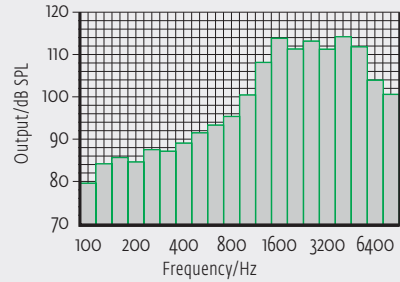
●● sino S

Fitting Range



The shaded area applies to the sino S with Easy Thin Tube Option.

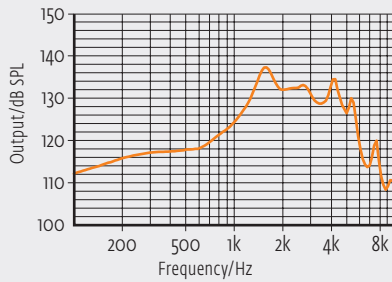
Third Octave Band Noise*



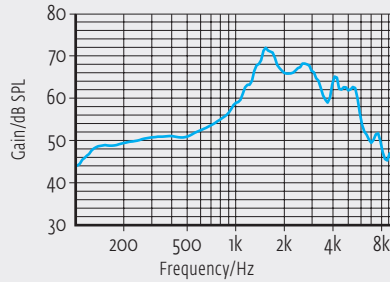
* All curves are measured with 2cm³-coupler (EN 60318-4:2010). Only when Tinnitus-Module is activated in audifit.

All curves are measured with Ear Simulator (EN 60318-4:2010) in reference setting.

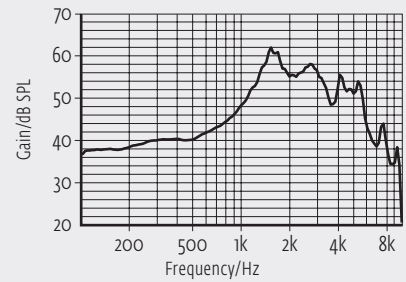
Maximum Output



Acoustic Gain

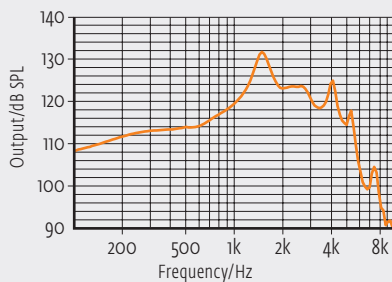


Frequency Response (RTG)

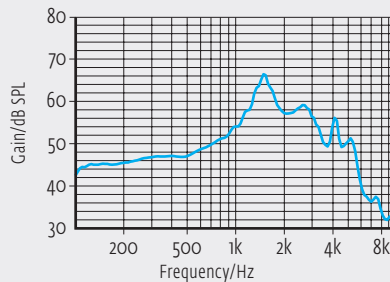


All curves are measured with 2cm³-coupler (EN 60318-5:2006) in reference setting.

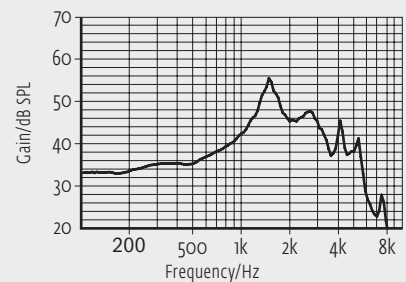
Maximum Output



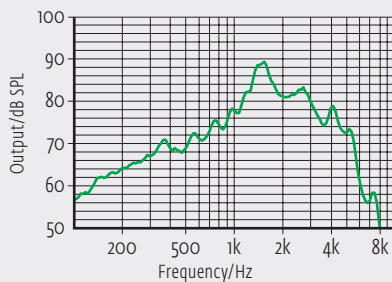
Acoustic Gain



Frequency Response (RTG)



Induction Coil Sensitivity



On account of the complex signal processing, the measurements of the represented curves are only possible in default setting of the device and under use of the current valid software version. Effects of the separate parameters see software.